



A comparative study of some properties of cassava (*Manihot esculenta*, Crantz) and cocoyam (*Colocasia esculenta*, Linn) starches

Louis M. Nwokocha^a, Ndubisi A. Aviara^b, Chandra Senan^c, Peter A. Williams^{c,*}

^a Department of Chemistry, University of Ibadan, Ibadan, Nigeria

^b Department of Agricultural and Environmental Resources Engineering, University of Maiduguri, Maiduguri, Nigeria

^c Center for Water Soluble Polymers, Glyndwr University, Wrexham LL11 2AW, UK

ARTICLE INFO

Article history:

Received 11 April 2008

Received in revised form 27 October 2008

Accepted 29 October 2008

Available online 13 November 2008

Keywords:

Cassava

Cocoyam

Starch

Pasting properties

Rheological properties

Paste clarity

Freeze-thaw stability

ABSTRACT

Some properties of cassava and cocoyam starches were studied and compared with a view to determining the functional applications in food systems for which they are suitable. The starches were compared in terms of their microscopic, thermal, physicochemical and rheological properties. Microscopy revealed smaller granule sizes of cocoyam starch compared with cassava. The amylose content was higher in cocoyam starch (33.3%) than in cassava starch (29.3%). Gelatinization in cassava starch occurred at a lower temperature range (60.11–72.67 °C) compared with cocoyam (72.96–80.25 °C) with the endothermic gelatinization enthalpy higher in cocoyam. The swelling power and solubility patterns indicated lower relaxation temperature, higher swelling and solubilization rates in cassava starch compared with cocoyam starch. The pasting characteristics of 8% (db, dry basis) starch slurry showed that cassava had higher peak viscosity but lower stability and setback ratios compared with cocoyam. This indicates that cocoyam starch paste is better in withstanding processing conditions and would present a superior thickening characteristic than cassava starch paste. The flow properties of both starch pastes showed non-Newtonian behaviour and could be best described by the Herschel–Bulkley model. The rate index and yield stress of cocoyam starch paste was higher than that of cassava. The storage modulus of cocoyam starch paste was higher than that of cassava indicating that cocoyam starch paste was more rigid than cassava starch paste. Cassava starch paste exhibited higher paste clarity and freeze-thaw stability than cocoyam starch paste. The properties of cassava and cocoyam starches dictate their food applications.

© 2008 Elsevier Ltd. All rights reserved.

1. Introduction

Cassava and cocoyam are important food crops in the tropics. Nigeria is a world-leading producer of cassava (FAOSTAT, 2001). However, despite the high production level, supply has not matched demand; this is because cassava serves both as a staple and an industrial raw material (Nweke, 2004). There is therefore need to expand the production of other carbohydrate-rich crops to provide for an alternative substitute of cassava in food and industry. Cocoyam is a promising food crop which can be produced on large scale in Nigeria (CBN, 1995). From both cassava and cocoyam, a large amount of starch is usually isolated and consumed in its colloidal form as 'fufu'. For these two starch types to be viable alternatives, a good understanding of their properties is important. Presently, the Government is placing emphasis on conversion of cassava into starch. Hence the production of starch from cassava and cocoyam for food and industrial users would be a commercially viable venture in Nigeria. The performance of a given starch

in any application is governed by its physicochemical properties. Starches from different sources are known to differ in their physical and chemical properties. These differences are believed to arise from differences in the amylose/amylopectin ratio in the starch granule, the characteristics of each fraction in terms of molecular weight, length/degree of branching and the physical manner in which these constituents are arranged within the starch granules, and the presence of naturally occurring non carbohydrate impurities (Leach, 1965). The physicochemical properties of starch are therefore an important consideration because they determine the use of any starch (Salehuzzman, Bleker, Jacobson, & Visser, 1992). A comparative examination of the properties of cassava and cocoyam starches is therefore important in understanding their similarities and differences in behaviour in food and industrial application. The physicochemical properties important in most applications include gelatinization temperature, swelling power and solubility; paste viscosity, retrogradation, flow and viscoelastic properties; paste clarity and freeze-thaw stability.

There have been a number of publications reporting on the properties of cassava (Camargo, Colonna, Buleon, & Richard-Molard, 1988; Charles, Chang, Ko, Sriroth, & Huang, 2005; Taiwo,

* Corresponding author.

E-mail address: p.a.williams@glyndwr.ac.uk (P.A. Williams).

2006) and cocoyam (Lu, Chen, Lin, & Chang, 2005; Sefa-Dedeh & Kofi-Agyir Sackey, 2002; Shiraishi et al., 1995) starches but only a few (Achille, Georges, & Alphonse, 2007; Gunaratne & Hoover, 2002; Wickramasinghe, Takigawa, Matsuura-Endo, Yamauchi, & Noda, 2009) have compared the properties of these two starch materials. This study was aimed at comparing the properties of cassava and cocoyam starches with a view to determining their applications in food systems and industry.

2. Materials and methods

2.1. Proximate analysis

Quantitative estimation of moisture, ash and amylose were determined by standard methods as described in *IITA Laboratory Manual* (1995). Nitrogen was determined by the method of Okalebo, Gathna, and Woomer (1993). The pH was measured according to the method of Camargo et al. (1988) with a Jenway pH meter; model 3015.

2.2. Microscopy of starches

Granule micrographs were obtained with a JSM 35 Genie Scanning Electron Microscope (SEM). The starch was sprinkled onto a double-backed adhesive carbon tab stuck to a circular aluminum stub. The aluminum stub with the starch sample on it was placed in the vacuum chamber of a Polaron PS 3 sputter coater, after attaining a vacuum of 0.1–0.2 torr and plasma current of 42 mA, the gold coating process was carried out for 140 s. The stub with gold coated starch was then placed in the SEM chamber which was evacuated before the electron beam was turned on. A 10 kV/2.05 A setting was used for the subsequent imaging work on starch, the aperture size being fixed at 3.

2.3. Gelatinization studies

Gelatinization enthalpy of starch was studied with a differential scanning calorimeter (Micro DSC III, Setaram Instruments) at 10% starch dispersions were heated from 25 °C to 90 °C at a scanning rate of 0.5 °C/min.

2.4. Physicochemical properties

The swelling power and solubility were determined by the methods of Konik, Kiskelly, and Gras (1993) and Gudmundsson and Alliason (1991), in a thermostatic Clifton water bath over a temperature range between 50–95 °C.

The pasting characteristics were determined using a Brabender viscoamylograph (Brabender Type 801203, Duisburg, Western Germany). An 8% starch (db) slurry of cassava and cocoyam starches in distilled water, was heated from 30 °C to 95 °C at spindle speed of 75 rpm. It was kept at this temperature for 30 min and then cooled to 50 °C. The heating and cooling rate was 1.5 °C per minute. The stability value and average slope of the viscosity curves during 30 min holding at 95 °C were measured to compare the shear thinning properties of the starch pastes. The paste clarity and freeze-thaw stability were determined by the methods of Singhal and Kulkarni (1990).

2.5. Rheological properties

The flow properties of the starch pastes were measured using a controlled stress Rheometer (AR 2000, TA Instruments Ltd) with cone and plate geometry (40 mm, 2 cone and 52 µm gap). Measurements were carried out at 25 °C and shear rates of 10^{−1} to

120/s. The TA Data Analysis software (version VI.2.5) was used to fit shear stress versus shear rate models viz; Newtonian, Power law, Bingham, Casson and Herschel–Bulkley to the experimental data. The goodness of fit for each model was evaluated using the standard error of estimate. A model was considered acceptable if the standard error was about 20 or less, and the model that has the lowest standard error was considered, best suited for the description of the shear stress–shear rate profile of the starch pastes.

The viscoelastic properties were determined by carrying out a frequency sweep in the range of 10^{−1} to 120 rad/s within the viscoelastic region (strain, 0.01%). The linear viscoelastic region was obtained by performing a stress sweep within the range of 0.01–50 Pa at an angular frequency of 2.683 rad/s. The TA Data Analysis software (version VI.2.5) was used to obtain the storage modulus (G′) and loss modulus (G′′) of the starch pastes.

3. Results and discussion

3.1. Proximate composition

The compositions of cassava and cocoyam starches are shown in Table 1. The moisture contents of both starches are within the 10–20% moisture level recommended for commercial starches (Soni, Sharma, Dun, & Gharia, 1993). The ash contents of cassava (0.29%) and cocoyam (0.09%) are low, and within the limit 0.5% recommended for grade A industrial starches (Radley, 1976). The starches are low in nitrogen; however, cassava starch is slightly higher in nitrogen content. Cassava and cocoyam starches differed in their amylose content. Differences in amylose content have been reported to result in differences in starch physicochemical properties (Schoch & Maywald, 1968). The granules of cassava and cocoyam starches are of intermediate sizes. While the granules of cassava starch are round or kettledrum shaped with smooth surfaces, those of cocoyam are mostly indented (Fig. 1). The granules of cassava starch ranged from 2.81 to 14.03 µm with an average size of 8.42 ± 3.35 µm while the granules of cocoyam starch ranged from 3.70 to 10.50 µm with an average granule size of 6.54 ± 2.23 µm. The granules of cassava starch are generally larger than those of cocoyam starch. Wickramasinghe et al. (2009) have reported on several varieties of cassava starches with median particle size of 11.3–15.7 µm and Taro (*Colocasia esculenta*) with median particle size of 10.2 µm. Sefa-Dedeh and Kofi-Agyir Sackey (2002) reported extreme granule sizes (0.05–1.75 µm) for three varieties of cocoyam while Lawal (2004) reported a granule size range of 15–40 µm for a new cocoyam (*Xanthosoma sagittifolium*) starch. The pH of the starches is within the acceptable range for food starches (Shipman, 1967).

3.2. Gelatinization temperature

The temperature at which heated starch granules dispersed in water undergo a transition from the crystalline state to a gel can

Table 1
Proximate composition of cassava and cocoyam starches^a.

Starch source	Cassava	Cocoyam
Moisture (%)	14.6 ± 0.20	11.8 ± 0.05
Ash (%)	0.29 ± 0.06	0.09 ± 0.04
Nitrogen (%)	0.08 ± 0.008	0.06 ± 0.004
Amylose (%)	29.29 ± 0.03	33.30 ± 0.09
Granule size range (µm)	2.81–14.03 (8.42 ± 3.35) ^b	3.70–10.50 (6.54 ± 2.13) ^b
pH at 25 °C	6.56	6.76

^a Results are mean of three determinations.

^b Granule size average (based on 30 granules).

be measured by use of a DSC. This temperature usually called gelatinization temperature is a very important property in starch characterization, and if determined under a defined condition, the gelatinization temperature range is characteristic of starch type and heterogeneity in the granule population. Since individual starch granules undergo gelatinization at a specific temperature within the range, the gel endotherm obtained is broad from which the onset temperature (T_o), peak temperature (T_p) and completion temperature (T_c) can be determined. Fig. 2 shows the gelatinization endotherm of 10% aqueous dispersions of cassava and cocoyam starches while the gelatinization parameters are shown in Table 2. Cassava starch gelatinized at a lower temperature range (60.11–72.67 °C) compared with cocoyam (72.96–80.25 °C). The gelatinization temperature range for the starches is

comparable with those reported in the literature (Lawal, 2004; Wickramasinghe et al., 2009). Gelatinization range has been reported to be dependent on differences in degree of heterogeneity of crystallites within the starch granules (Gunaratne & Hoover, 2002). The wider gelatinization range of cassava starch relative to cocoyam starch indicates greater heterogeneity of crystallites within the cassava starch granule population. The higher endothermic melting enthalpy of cocoyam starch compared with cassava starch indicates its more crystalline granule structure.

3.3. Swelling power and solubility

The swelling power and solubility were studied to understand the nature of intra-granular bonds. When cassava and cocoyam

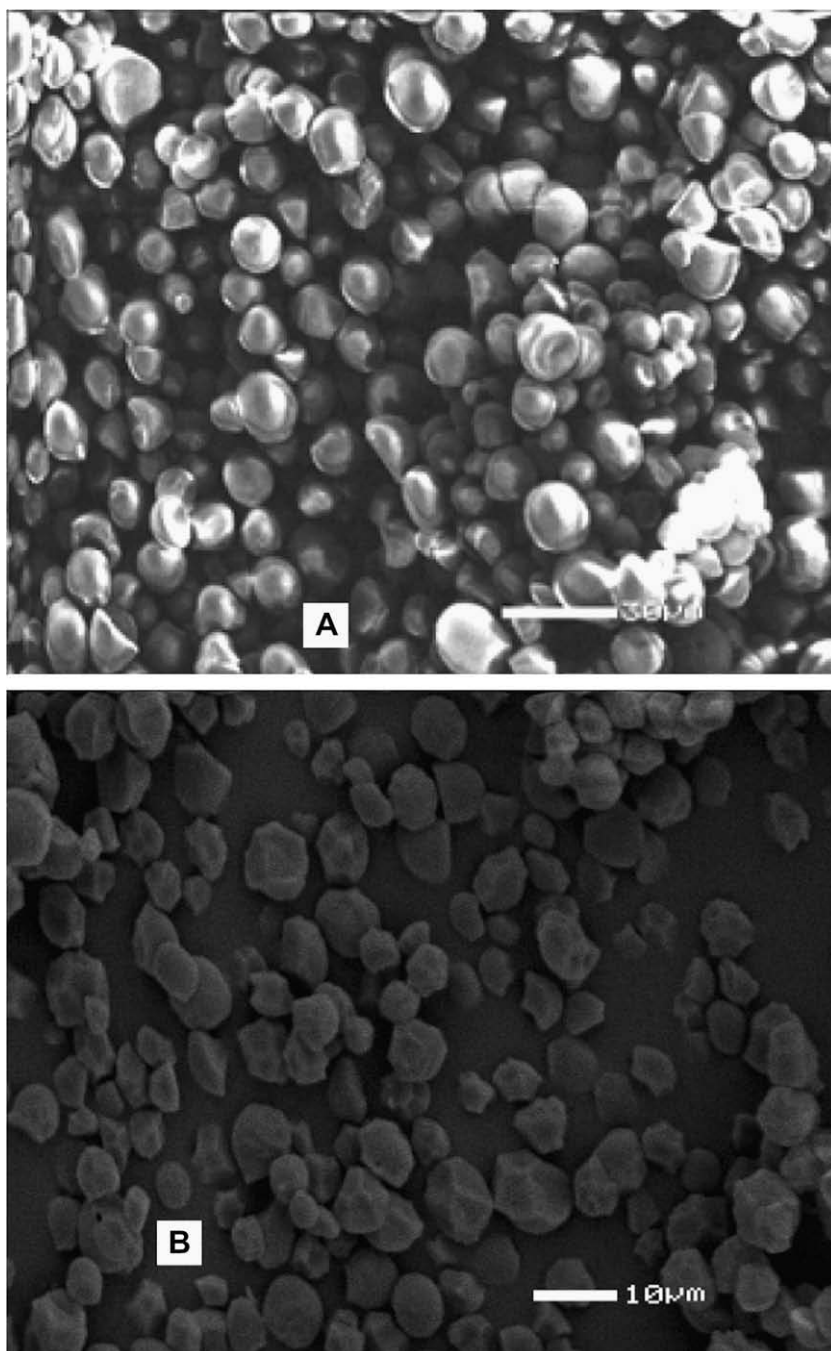


Fig. 1. SEM micrographs of cassava (A) and cocoyam (B) starch granules.

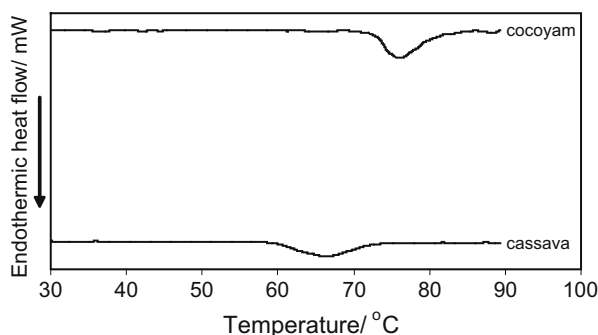


Fig. 2. Differential scanning calorimetry (DSC) of 10% dispersions of cassava and cocoyam starches in distilled water.

Table 2

Gelatinization properties of cassava and cocoyam starches.

Gelatinization parameters	Cassava	Cocoyam
Onset temperature, T_o (°C)	60.11	72.96
Peak temperature, T_p (°C)	66.15	76.04
Completion temperature, T_c (°C)	72.67	80.25
Gelatinization range, $(T_c - T_o)$ (°C)	12.56	7.29
Endothermic enthalpy, ΔH (J/g)	14.35	17.17

starches were heated in a water suspension to progressively higher temperatures, the starches exhibited different swelling (Fig. 3) and solubility (Fig. 4) profiles. Differences in swelling and solubility profiles indicate difference in the bonding forces within the starch granules. These bonds relax with increase in thermal agitation causing the starch granules to imbibe water, swell, and the low molecular weight amylose solubilize and leach out into the aqueous medium (Balagopalan, Padmaja, Nanda, & Moorthy, 1988). Cassava starch exhibited weak intra-granular organization as indicated by its low relaxation temperature (60 °C) and its rapid swelling at lower temperatures. Cocoyam starch, on the other hand, exhibited a more crystalline structure as indicated by its high relaxation temperature (75 °C) and less rapid swelling. The swelling power of cassava was 1.6 times that of cocoyam at 95 °C. Though cassava and cocoyam differed widely in their swelling powers, 31.28 and 19.38, respectively, at 95 °C; their solubilities 18.89 and 18.79 were similar at 95 °C. The swelling and solubility profiles indicate that, cocoyam starch granules had greater intra-granular organization in which most of the bonding forces required energy supplied in the temperature range 75–80 °C to cause relaxation.

3.4. Pasting characteristics

The Brabender amylograph paste viscosity analysis of the 8% (db) cassava and cocoyam starch slurries is presented in Table 3,

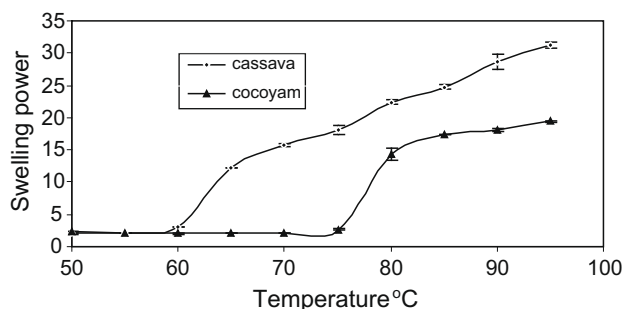


Fig. 3. Swelling power patterns of native cassava and cocoyam starches.

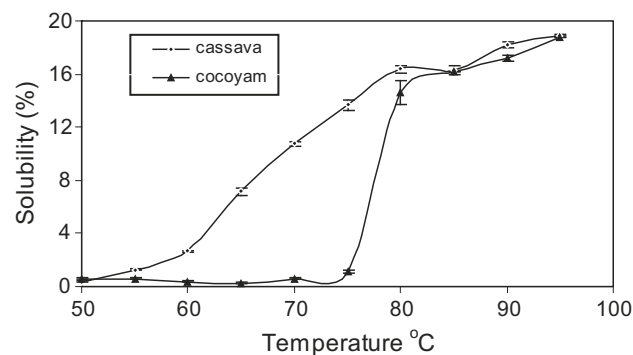


Fig. 4. Solubility patterns of cassava and cocoyam starches.

while the pasting curves are presented in Fig. 5. Cassava starch started gaining viscosity at 68 °C and rose rapidly to a peak viscosity of 845 BU at 78 °C while cocoyam starch started gaining viscosity at 78 °C and attained a peak viscosity of 630 BU at 91 °C. The lower pasting temperature and rapid rise in viscosity to peak of cassava starch relative to cocoyam starch indicates a weak granular structure (Ciaccio & D'Appolonia, 1977). The cold paste viscosity of cocoyam (1024 BU) was higher than that of cassava (640 BU) and this shows that cocoyam starch paste has a superior thickening property than cassava. Cocoyam starch paste ($C/P = 0.65$) was more stable to shear thinning than cassava starch paste ($C/P = 0.39$). This indicates that cocoyam starch paste has more capacity to withstand severe processing conditions than cassava starch paste. The setback ratio of cocoyam starch paste ($C/H = 2.50$) was higher than that of cassava ($C/H = 2.0$), indicating a higher retrogradation rate in cocoyam starch dispersion due to the association of leached amylose molecules. This property of cocoyam starch makes it suitable for use in jelly foods.

3.5. Flow properties

The shear stress–shear rate profiles of cassava and cocoyam starch pastes are presented in Fig. 6. The best shear stress–shear rate model for describing the flow characteristics of the starch pastes was the Herschel–Bulkley model ($\sigma = \sigma_y + \eta \dot{\gamma}^N$). The estimated parameters from the Herschel–Bulkley model fitting are presented in Table 4. The rate index for the two starch pastes were less than 1 indicating their pseudoplastic behaviour. Zhao, Qiu, Xiong, and Liu (2007) and Mohd. Nuru, Mohd. Azemi, and Manan (1999) have reported similar results for other starch pastes. The higher rate index of cocoyam starch paste shows that its stability to shear thinning is higher, thereby confirming the result obtained from paste viscosity analysis. The higher yield stress of cocoyam starch shows that the paste has a higher initial resistance to flow and is, therefore, more structured or rigid than the cassava starch paste.

Table 3

Brabender amylograph paste viscosity analysis of 8% slurry of cassava and cocoyam starches.

Starch property	Cassava	Cocoyam
Pasting temperature, T_p (°C)	68	78
Temperature at peak viscosity, T_p (°C)	78	91
Peak viscosity during heating, P (BU)	845	630
Viscosity at 95°C (BU)	590	545
Viscosity after 30 min holding at 95 °C, H (BU)	320	410
Viscosity on cooling to 50 °C, C (BU)	640	1024
Stability ratio (H/P)	0.39	0.65
Setback ratio (C/H)	2.0	2.50

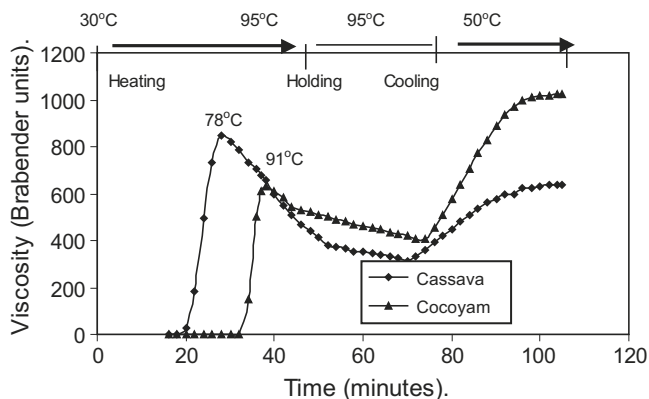


Fig. 5. Brabender amylograph paste viscosity of 8% slurry of cassava and cocoyam starches.

3.6. Viscoelastic properties

The dynamic frequency sweeps for cassava and cocoyam starch pastes are presented in Fig. 7. Both the storage and loss moduli (G' and G'') increased with increase in angular frequency. The storage modulus of each starch paste was higher than the loss modulus, a characteristic of gels. The G' of cocoyam starch paste was higher at all points than that of cassava. This indicates the presence of higher macromolecular chain rigidity in cocoyam starch paste compared with cassava. This observation is in agreement with the result in the paste viscosity analysis where cocoyam starch paste exhibited higher stability to shears compared with cassava starch paste. The G' of starch pastes has been reported to be affected by the rigidity of starch granules (Han, Campanella, Guan, Keeling, & Hamaker, 2003; Tsai, Li, & Lii, 1997). Case et al. (1998) have reported positive correlation between G' and amylose content which agrees with our result. The loss modulus of cocoyam and cassava starch pastes did not show any significant difference.

3.7. Paste clarity

Fig. 8 shows that at all concentrations ranging from 0.5% to 4.0%, cassava starch exhibited higher paste clarity than cocoyam starch. This is in agreement with the fact that starches with higher swelling power and lower retrogradation tendency have higher paste clarity (Ciaccio & D'Appolonia, 1977). The general decrease in clarity observed with cocoyam starch paste is as a result of increased retrogradation arising from increased reassociation of released amylose molecules, which accompanied increase in starch concen-

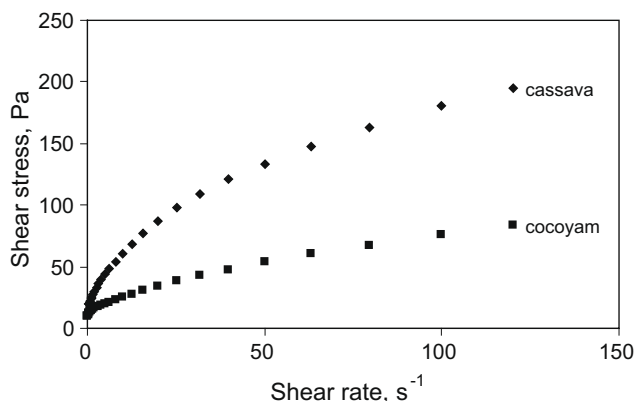


Fig. 6. Shear stress–shear rate profiles for 8% gel of cassava and cocoyam starch pastes.

Table 4

Estimated parameters from Herschel–Bulkley fitted shear stress–shear rate profiles of cassava and cocoyam starch pastes at 25 °C.

Parameter	σ_Y	η	n	s.e.
Cassava starch	4.024	19.33	0.4815	10.17
Cocoyam starch	9.726	3.984	0.6110	5.532

σ_Y = Yield stress (Pa), η = Viscosity (Pa s), n = Rate index, s.e. = Standard error.

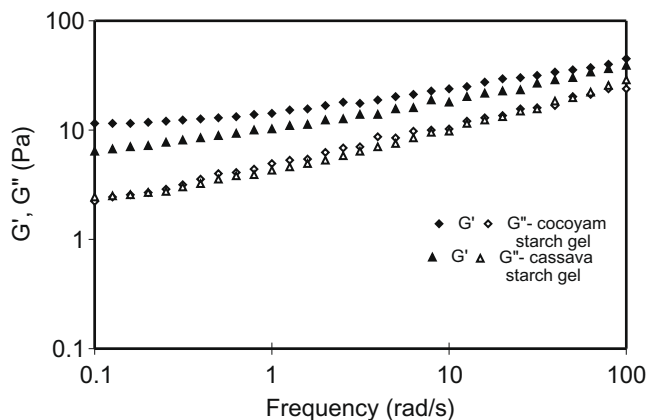


Fig. 7. Dynamic frequency sweep showing G' and G'' for 8% gels of cassava and cocoyam starch pastes.

tration. Cassava starch paste however, exhibited a decrease in clarity with increase in starch concentration up to 2.0% and increased again as starch concentration increased further. This observation with cassava starch paste could be due to a change in mechanism of retrogradation at starch concentrations above 2.0% as a result of interaction between the bulkier amylose and amylopectin molecules in starch reflecting their high molecular weight and possible degree of branching (Wurzburg, 1986). Similar trend in paste clarity has been reported for hydroxyethyl starch of 0.1 degree of substitution (Pomeranz, 1991). Achille et al. (2007) have reported paste clarity of 15.8% and 40.7% for cocoyam and cassava starches, respectively, at 1% starch paste at 650 nm. Paste clarity has been reported to be negatively correlated with amylose content (Visser, Suurs, Bruinenberg, Bleeker, & Jacobsen, 1997) and granule size (Ahamed, Singhal, Kulkarni, & Pal, 1996; Singhal & Kulkarni, 1990).

3.8. Freeze-thaw stability

Fig. 9 shows the percentage syneresis increased with number of days of freeze-thaw cycles until a maximum was achieved. Cassava

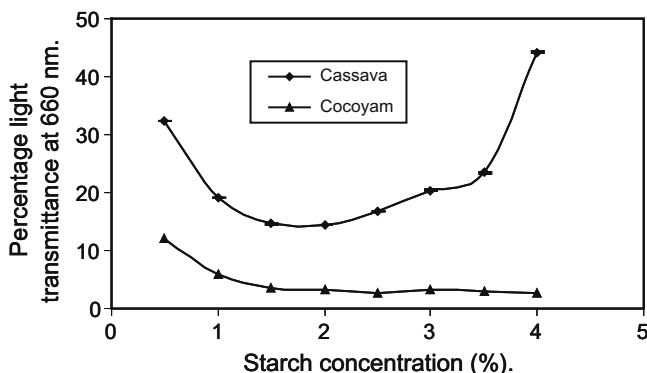


Fig. 8. Paste clarity of cassava and cocoyam starch pastes.

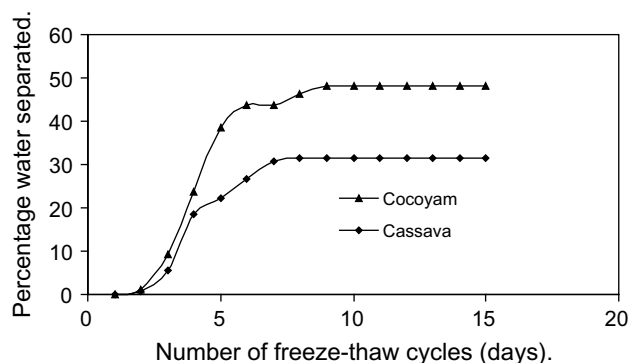


Fig. 9. Freeze-thaw stability of native cassava and cocoyam starch pastes.

starch paste exhibited higher freeze-thaw stability than cocoyam starch paste and achieved maximum water loss of 31.3% as against 47.4% of cocoyam starch paste at the 13th freeze-thaw cycle. The lower freeze-thaw stability of cocoyam starch is in line with its higher amylose content and retrogradation tendency (Ciaccio & D'Appolonia, 1977); and smaller granule size (Singhal & Kulkarni, 1990).

4. Conclusion

Some properties of cassava and cocoyam starches were studied and compared. Cocoyam starch granules were generally smaller than those of cassava starch. Cocoyam starch also had higher amylose content compared with cassava starch. The gelatinization temperature and the endothermic gelatinization enthalpy were higher in cocoyam than cassava. The swelling and solubility patterns indicated lower relaxation temperature, higher swelling and solubilization rates in cassava starch compared with cocoyam starch. The pasting characteristics of 8% (db) starch slurry showed that cassava had higher peak viscosity but lower stability and setback ratios compared with cocoyam. This indicates that cocoyam starch paste is better in withstanding processing conditions and would present a superior thickening characteristic than cassava starch paste. The flow properties of both starch pastes showed non-Newtonian behaviour and could be best described by the Herschel–Bulkley model. The storage modulus of cocoyam starch paste was higher than that of cassava indicating that cocoyam starch paste was more rigid than cassava starch paste. Cassava starch paste exhibited higher paste clarity and freeze-thaw stability than cocoyam starch paste.

References

- Achille, T. F., Georges, A. N. G., & Alphonse, K. (2007). Contribution of light transmittance modelling in starch media. *African Journal of Biotechnology*, 6(5), 569–575.
- Ahamed, N. T., Singhal, R. S., Kulkarni, P. R., & Pal, M. (1996). Physicochemical and functional properties of *Chenopodium quinoa* starch. *Carbohydrate Polymers*, 31(1–2), 99–103.
- Balogopalani, C., Padmaja, G., Nanda, S. K., & Moorthy, S. N. (1988). *Cassava in food, feed and industry*. Boca Raton, Florida: CRC Press Inc. (pp. 126–127).
- CBN (1995). *Central Bank of Nigeria Statistical Bulletin*, 6, 2, 122.
- Camargo, C., Colonna, P., Buleon, A., & Richard-Molard, D. (1988). Functional properties of sour cassava (*M. utilisima*) starch: Polvilho Azedo. *Journal of Science of Food and Agriculture*, 45(3), 273–289.
- Case, S. E., Capitani, T., Whaley, J. K., Shi, Y. C., Trzascko, P., Jeffcoat, R., et al. (1998). Physicochemical properties and gelation behaviour of a low-amylopectin maize

- starch and other high-amylose maize starches. *Journal of Cereal Science*, 27, 301–314.
- Charles, A. L., Chang, Y. H., Ko, W. C., Sriroth, K., & Huang, T. C. (2005). Influence of amylopectin structure and amylose content on the gelling properties of five cultivars of cassava starch. *Journal of Agriculture and Food Chemistry*, 53(7), 2717–2725.
- Ciaccio, C. F., & D'Appolonia, B. K. (1977). Characterization of starches from various tubers and their use in bread making. *Cereal Chemistry*, 54, 1096–1107.
- FAOSTAT (2001). <http://www.fao.org>.
- Gudmundsson, M., & Allansson, A-C. (1991). Gel volume and amylose leaching. *Cereal Chemistry*, 68(2), 172–177.
- Gunaratne, A., & Hoover, R. (2002). Effect of heat-moisture treatment on the structure and physicochemical properties of tuber and root starches. *Carbohydrate Polymers*, 49, 425–437.
- Han, X-Z., Campanella, O. H., Guan, H., Keeling, P. L. & Hamaker, B. R. (2003). Influence of maize starch granule-associated protein on the rheological properties of starch pastes Part II. *Dynamic measurements of viscoelastic properties of starch pastes*.
- IITA Laboratory Manual (1995). *Methods for Maize quality evaluation*. (A.U. Okorowa, Compiler). Ibadan, Nigeria: International Institute of Tropical Agriculture Press.
- Konik, C. M., Kiskelly, D. M., & Gras, P. W. (1993). Starch: Swelling power, grain hardness and protein. Relation to sensory properties of Japanese noodles. *Starch/Stärke*, 45(4), 139–144.
- Lawal, O. S. (2004). Composition, physicochemical properties and retrogradation characteristics of native, oxidised, acetylated and acid-thinned new cocoyam (*Xanthosoma sagittifolium*) starch. *Food Chemistry*, 87, 205–218.
- Leach, H. W. (1965). Gelatinization of Starch. In R. L. Whistler & E. F. Paschal (Eds.). *Starch: Chemistry and Technology* (Vol. 1, pp. 289–307). New York: Academic Press.
- Lu, T-J., Chen, J-C., Lin, C-L., & Chang, Y-H. (2005). Properties of cocoyam (*Xanthosoma sagittifolium*) tubers planted in different seasons. *Food Chemistry*, 91, 69–77.
- Mohd. Nuru, I., Mohd. Azemi, B. M. N., & Manan, D. M. A. (1999). Rheological behaviour of sago (*Metroxylon sagu*) starch paste. *Food Chemistry*, 64(4), 501–505.
- Nweke, F. (2004). New Challenges in the Cassava Transformation in Nigeria and Ghana. EPTD Discussion Paper No. 118. Environment and Production Technology Division, International Food Policy Research Institute 2033 K Street, NW Washington, D.C. 20006 USA. <http://www.ifpri.org/divs/eptd/dp/papers/eptdp118.pdf>.
- Okalebo, J. R., Gathna, K. W., & Woome, P. I. (1993). *Laboratory methods of soil and plant analysis. A working Manual*. TSBF Nairobi: Kenya (pp. 22–29).
- Pomeranz, Y. (1991). *Carbohydrates: Starch. In functional properties of food components* (2nd Edition). New York: Academic Press Inc. (p. 76).
- Radley, J. A. (1976). *Starch production technology*. London: Applied Science Publishers Ltd (pp. 203–208).
- Salehuzzman, S., Bleker, T., Jacobson, E., & Visser, R. G. F. (1992). Cloning and characterization of starch biosynthetic genes in cassava (*Manihot esculenta* Crantz). In W. M. Roca & A. M. Thro (Eds.), *Proceedings CBN first Int'l scientific conference meeting of the cassava biotechnology network* (pp. 229–233). CIAT.
- Schoch, T. J., & Maywald, E. C. (1968). Preparation and properties of various legume starches. *Cereal Chemistry*, 45, 564–573.
- Sefa-Dedeh, S., & Kofi-Agyir Sackey, E. (2002). Starch structure and some properties of cocoyam (*Xanthosoma sagittifolium* and *Colocasia esculenta*) starch and raphides. *Food Chemistry*, 79(4), 435–444.
- Shipman, L. (1967). In R. L. Whistler (Ed.). *Starch: Chemistry and technology* (Vol. II, pp. 115). Academic Press.
- Shiraishi, K., Lauzon, R. D., Yamazaki, M., Sawayama, S., Sugiyama, N., & Kawabata, A. (1995). Rheological properties of cocoyam starch paste and gel. *Food Hydrocolloids*, 9(2), 69–75.
- Singhal, R. S., & Kulkarni, P. R. (1990). Some properties of *Amaranthus Paniculatus* (Rajgeera) starch pastes. *Starch/Stärke*, 42(1), 5–7.
- Soni, P. L., Sharma, H., Dun, D., & Gharia, M. M. (1993). Physicochemical properties of *Quercus leucotrichophora* (Oak) starch. *Starch/Stärke*, 45(4), 127–130.
- Taiwo, K. A. (2006). Utilization potentials of cassava in Nigeria: The domestic and industrial products. *Food Reviews International*, 22(1), 29–42.
- Tsai, M. L., Li, C. F., & Lii, C. Y. (1997). Effect of granular structures on the pasting behaviours of starches. *Cereal Chemistry*, 74, 750–757.
- Visser, R. G. F., Suurs, L. C. J. M., Bruinenberg, P. M., Bleeker, I., & Jacobsen, E. (1997). Comparison between amylose-free and amylose containing potato starches. *Starch/Stärke*, 49(11), 438–443.
- Wickramasinghe, H. A. M., Takigawa, S., Matsuura-Endo, C., Yamauchi, H., & Noda, T. (2009). Comparative analysis of starch properties of different root and tuber crops of Sri Lanka. *Food Chemistry*, 112, 98–103.
- Wurzburg, B. O. (1986). In O. B. Wurzburg (Ed.), *Modified starches: Properties and uses* (pp. 4–10). Boca Raton: CRC Press Inc..
- Zhao, S-m, Qiu, C-g, Xiong, S-b, & Liu, Y-m (2007). Rheological properties of amylopectins from different rice type during storage. *Journal of Central South University of Technology*, 14(1), 510–513.